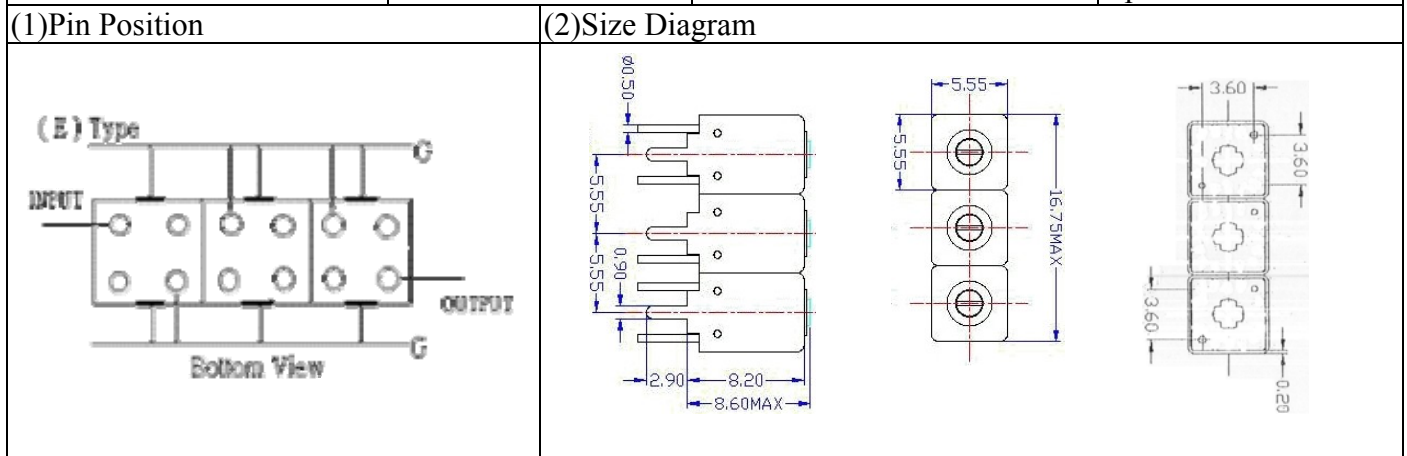


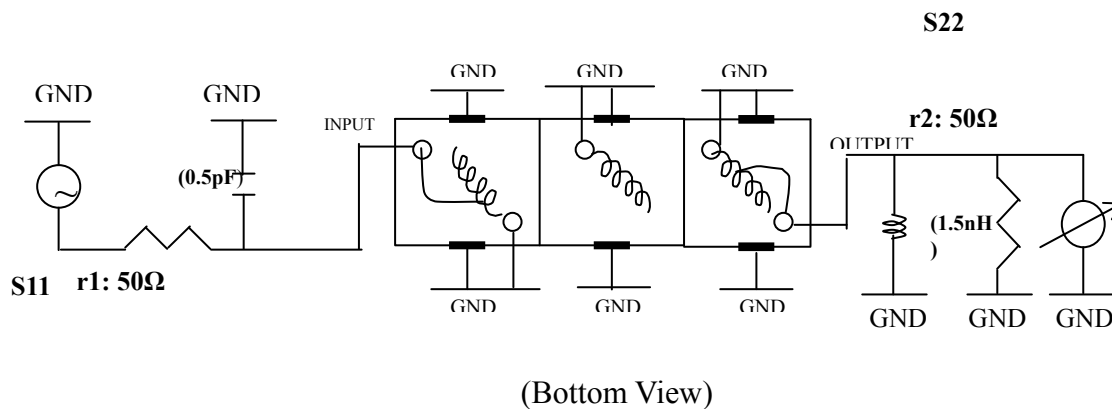
VHF UHF Helical Filter Specification Sheet

Customer Name		Temwell's Part No.	TTW3885E-1390M
Approval No. /dated	0804065APR	Acceptable Specift Fo Range	1351~1400MHz
Work Instruction No.	0804065CD	Date	Apr.30.2008



(3) Electric Chararistic			
Item		Specify	Performance
Center Freq.(Fo) +/- 0.5 %		1390 MHz	10390 MHz
Tunable Range:		1390±5 MHz	1390±5 MHz
Insertion Loss		Typ. 2.0 dB	1.27 dB
-3 dB Bandwidth		Typ. 220 MHz	234 MHz
Sensitivity (Attenuation)	Fo - 350 MHz	Typ. 39 dB	42 dB
	Fo + 350 MHz	Typ. 20 dB	23 dB
	Fo - ()MHz	Typ. dB	dB
	Fo +()MHz	Typ. dB	dB
Return Loss		Min. 12 dB	16.0 dB
Ripple		< 1 dB	dB
Impedance		In / Out : 50 Ω	In / Out : 50 Ω
(4) Torque for Tuning Screw		> 60gf · cm	
(5) Temperature Condition:			
Operating Temperature		0°C ~ +60°C	
Storage Temperature		-20°C ~ +70°C	
(6) Input Power		> 0.5Watt	

(7) Measuring Circuit: ※Easy to match Impedance S11/S22 50Ω/ by parallel with about (0.5pF) / (1.5nH).



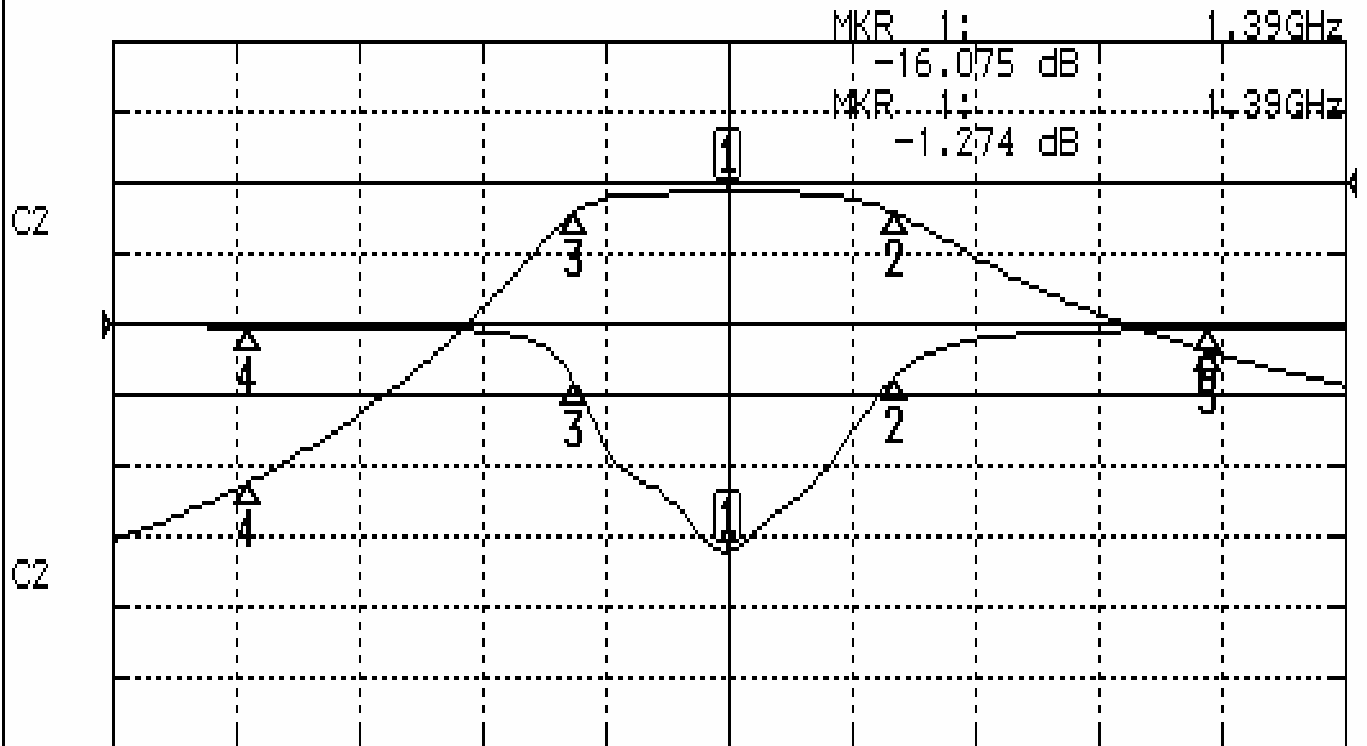
Approval	Supervisor	Designer	Aperture size
C.Y.Chang	C.S.Chang	P.H.Chiang	5W3(3.8*5.1) 5HW046RB4.5

TEMWELL CORPORATION

Performance-TTW3885E-1390M

0804065CD

CH1 S11 LOG MAG REF 0.000 dB 5.000 dB/
CH2 S21 LOG MAG REF 0.000 dB 10.000 dB/



CENTER 1.39GHz

[10.00 dBm]

SPAN 900MHz

CH1 MARKER LIST

Marker	Frequency (GHz)	Magnitude (dB)
1	1.390 000	-16.075
2	1.511 500	-3.731
3	1.277 500	-4.036
4	1.040 000	-0.189
5	1.740 000	-0.401

CH2 MARKER LIST

Marker	Frequency (GHz)	Magnitude (dB)
1	1.390 000	-1.272
2	1.511 500	-4.287
3	1.277 500	-4.300
4	1.040 000	-42.285
5	1.740 000	-23.810