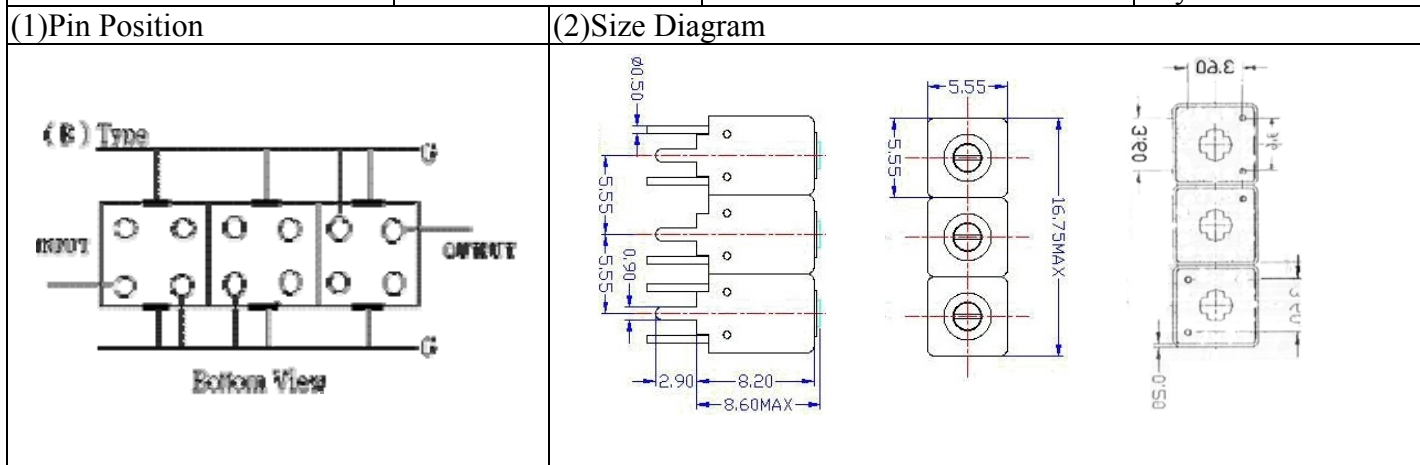


VHF UHF Helical Filter Specification Sheet

Customer Name		Temwell's Part No.	TTW3588B-1575M
Approval No. /dated	20111127DC	Acceptable Specify Fo Range	1551~1600MHz
Work Instruction No.	20111127DC	Date	July.17.2008



(3) Electric Character

Item	Specify	Performance	
Center Freq.(Fo) +/- 0.5 %	1575 MHz	1575 MHz	
Tunable Range:	1575±5 MHz	1575±5 MHz	
Insertion Loss	Typ. 4.0 dB	3.02 dB	
-3 dB Bandwidth	Typ. 40 MHz	53.3 MHz	
Sensitivity (Attenuation)	Fo - 100 MHz	Typ. 32 dBc	35 dBc
	Fo + 100 MHz	Typ. 25 dBc	27 dBc
	Fo - ()MHz	Typ. dBc	dBc
	Fo + ()MHz	Typ. dBc	dBc
Return Loss	Min. 12 dB	24.5 dB	
Ripple	< 1 dB	dB	
Impedance	In / Out : 50 Ω	In / Out : 50 Ω	

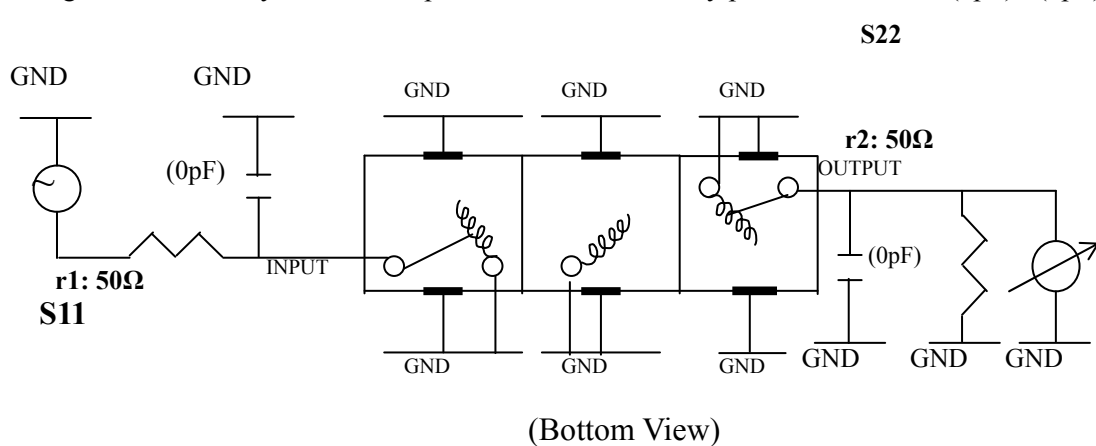
(4) Torque for Tuning Screw > 100gf • cm

(5) Temperature Condition:

Operating Temperature	0°C ~ +60°C
Storage Temperature	-20°C ~ +70°C

(6) Input Power > 0.5Watt

(7) Measuring Circuit: ※Easy to match Impedance S11/S22 50Ω by parallel with about(0pF) / (0pF).



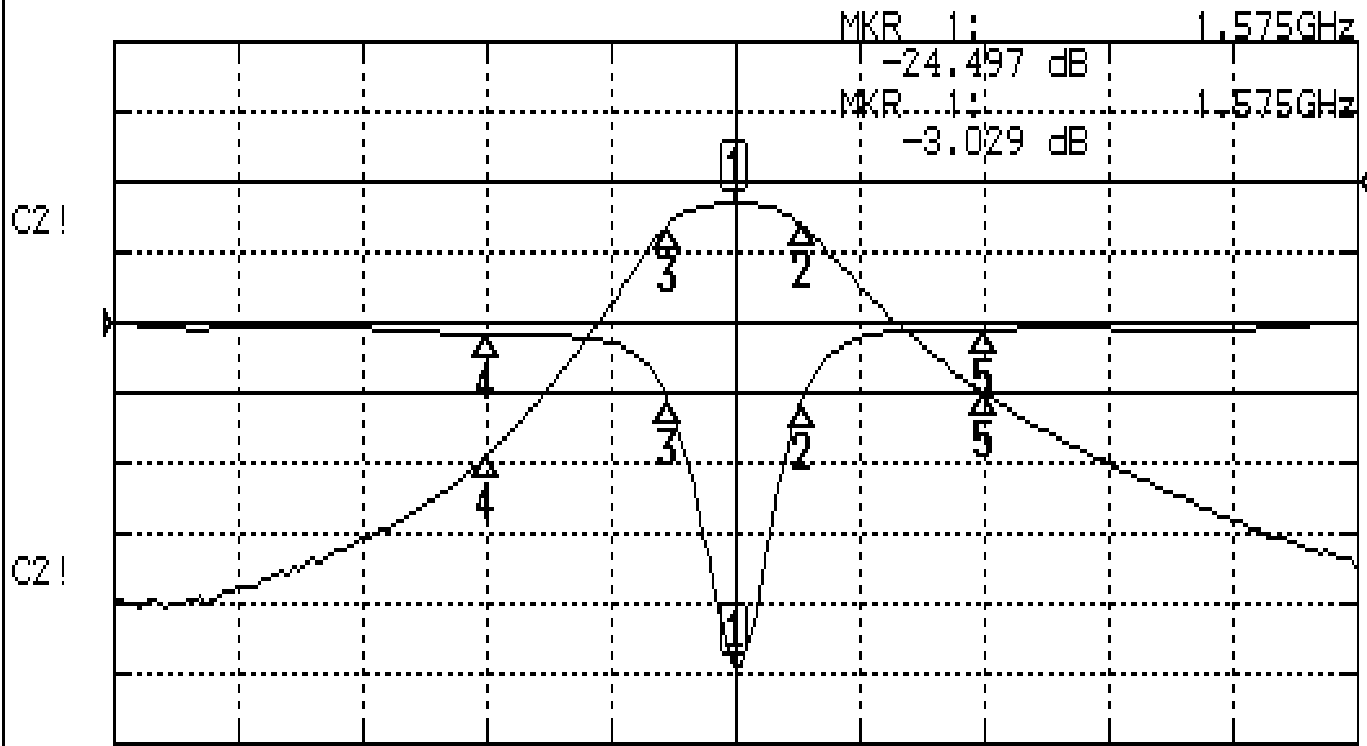
Approval	Supervisor	Designer	Aperture size
C.Y.Chang	C.S.Chang	J.F.Lin	5W3(3.8*4.0) 5W024RB3

TEMWELL CORPORATION

Performance-TTW3588B-1575M

2011127DC

CH1 S11 LOG MAG REF 0.000 dB 5.000 dB/
CH2 S21 LOG MAG REF 0.000 dB 10.000 dB/



CENTER 1.575GHz

[10.00 dBm]

SPAN 500MHz

CH1 MARKER LIST

Marker	Frequency (GHz)	Magnitude (dB)
1	1.575 000	-24.516
2	1.601 666	-15.649
3	1.548 333	-15.713
4	1.475 000	-0.923
5	1.675 000	-0.574

CH2 MARKER LIST

Marker	Frequency (GHz)	Magnitude (dB)
1	1.575 000	-3.029
2	1.601 666	-16.130
3	1.548 333	-16.094
4	1.475 000	-38.850
5	1.675 000	-30.156